

Signature all-suite style  
*Sincerely Yours*



A showcase of boutique comfort and style in legendary Whistler Resort, Pan Pacific Village Centre is renowned for its spacious suites and thoughtful amenities, such as a lovely pool deck with a lap pool and two hot tubs. Experience gracious hospitality at our all-suite hotel in Whistler Village.



PAN PACIFIC  
WHISTLER VILLAGE CENTRE

**Facilities & Amenities**

- Kitchen, fireplace and balcony in every suite
- Heated outdoor saltwater lap pool and two hot tubs with spectacular mountain views
- Therapeutic Nordic sauna
- Personal ski lockers with valet service, located slope-side at Pan Pacific Mountainside
- Bike and golf club storage
- Hosted Après (seasonal)
- Pet-friendly
- Full-service, 24-hour front desk and Guest Services
- Daily housekeeping
- Secure, underground parking; valet service available
- EV charging stations
- Courtesy shuttle service within Whistler Village
- Complimentary high-speed Wi-Fi
- Convenient on-site guest laundry facilities
- Meeting and event facilities with natural light and views
- Whistler Day Spa
- The Raven Room Restaurant & Cocktail Bar



## Dining

At Pan Pacific Village Centre, guests appreciate the convenience of fully-equipped kitchens for home-cooking, or the ease of enjoying fresh, seasonal dishes at The Raven Room Restaurant & Cocktail Bar located on the Lobby level. The Raven Room is a welcoming space to unwind after your mountain adventures, offering floor-to-ceiling windows, mountain views, a stunning patio, award-winning cocktails and delicious small and large plates crafted with locally sourced ingredients. Guests also appreciate the seasonal hosted Après in the Pacific Lounge, featuring comforting snacks, hot chocolate, and other warm touches that celebrate the spirit of Whistler.

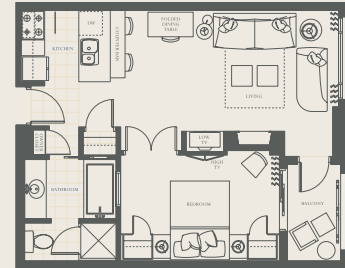
The hotel is steps from an exciting range of delicious dining choices and fun entertainment options in Whistler Village, including Dubh Linn Gate Irish Pub at sister hotel Pan Pacific Mountainside, a five-minute walk away



## Meeting Facilities

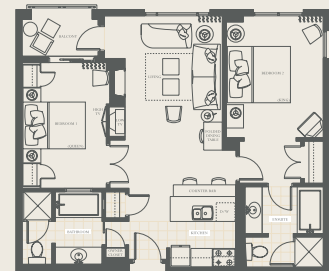
The Gallery on Lobby level is a versatile event room for up to 50 people, with natural alpine lighting, sound and climate controls, high-speed Internet, and a private patio. Also, on the Lobby level, there is a lovely outdoor Garden Terrace, for boutique receptions and services. Additionally, ask about our large specialty suites, which are ideal for small teambuilding breakouts, receptions and board meetings.

## One Bedroom Suites 569 - 810 sq ft



- Separate bedroom with king bed
- Living area with gas fireplace, balcony, and a queen sofa bed
- Fully-equipped kitchen and dining area
- Spacious bathroom with separate shower stall and bathtub

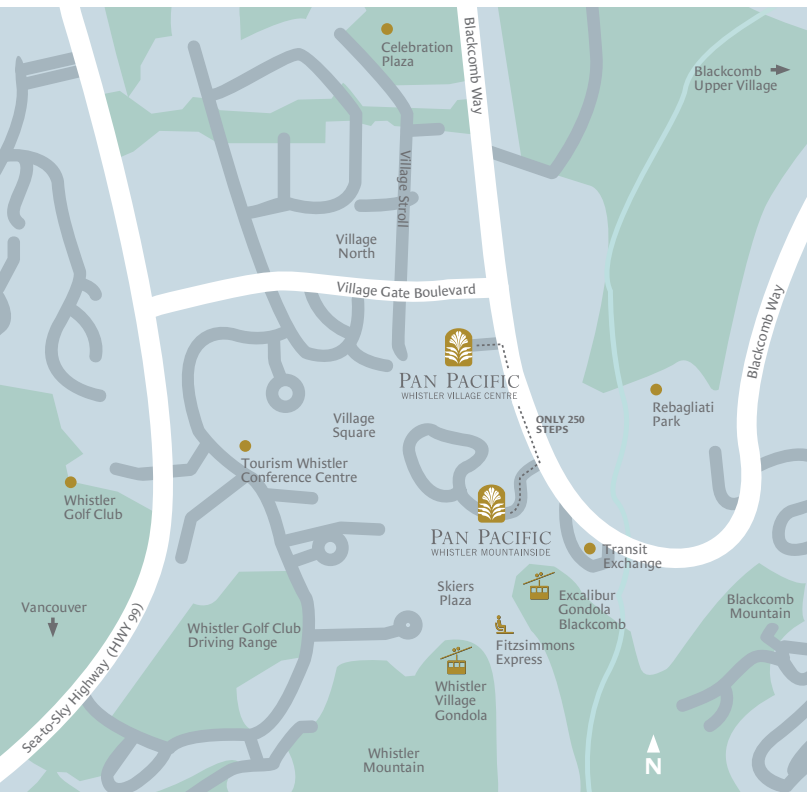
## Two Bedroom Suites 906 - 1,231 sq ft



- Primary bedroom with a king bed and second bedroom with a queen bed
- Living area with gas fireplace, balcony, and a queen sofa bed
- Fully-equipped kitchen and dining area
- Two bathrooms with separate shower stall and bathtub

## Specialty & Penthouse Suites 1,170 - 1,706 sq ft

- Various sizes and layouts
- Two Bedroom and Den, Three Bedroom and Den
- Oversized living areas with gas fireplace
- Fully-equipped kitchens and spacious dining areas
- Large private patios



**Pan Pacific Whistler Village Centre**

4299 Blackcomb Way, Whistler, BC Canada V8E 0X3

Direct 604 966 5500 Toll-free 1 888 905 9995

enquiry.ppwvh@panpacific.com

[panpacificwhistler.com](http://panpacificwhistler.com)



PAN PACIFIC | DISCOVERY